

# MERISCREEN hCG

*One step rapid Test for hCG*

Meril

Diagnostics

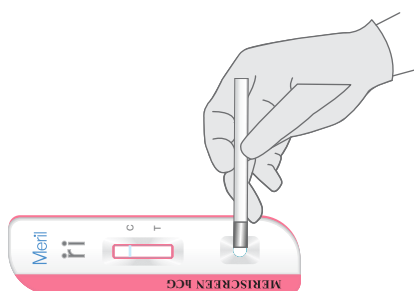
MERISCREEN hCG is a rapid immuno-chromatographic test device for qualitative detection of human chorionic gonadotropin (hCG) in human urine to aid in the early detection of pregnancy

## Salient Features

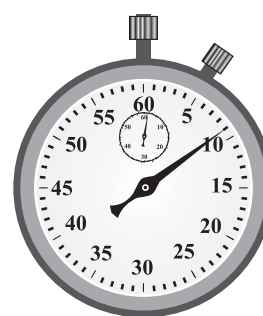
- Detection in urine as early as 7-10 days after conception
- Specimen Type: Urine (First morning midstream urine)
- Specimen volume: 1 Drop (Dropper Provided)
- Detection Limit: =25 mIU/ml
- Result Interpretation time: 20 Minutes
- Room Temperature Storage



## Test protocol

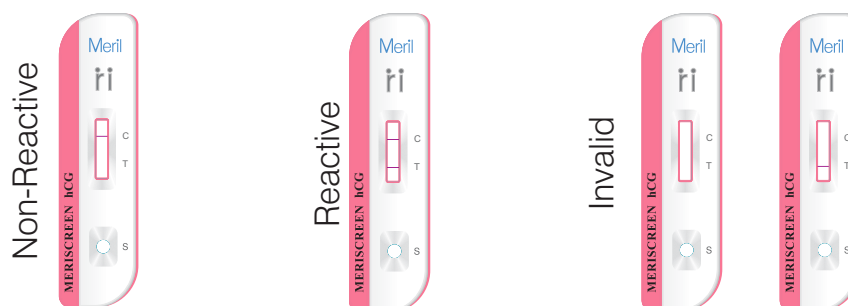


Dispense one drop of Urine specimen into sample port of device.



Read results at 10 minutes

## Interpretation of test results



Product Code	Material Description	Pack Size
RPDHCG-01	MERISCREEN hCG	50 Test

Meril

Diagnostics

### Meril Diagnostics Pvt. Ltd.

D1- D3, Second Floor, Meril Park, Survey No. 135/2/B & 174/2, Muktanand Marg, Chala, Vapi - 396191, India

601, Midas, Sahar Plaza Complex, J.B Nagar, Andheri East, Mumbai - 400059

Tel: +91 260 2408000 | Fax: +91 260 2408025 | Customer Care: 1-800-266-3745 (Toll Free) | Email: [diagnostics@merillife.com](mailto:diagnostics@merillife.com)