

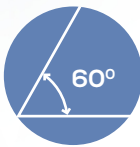
MIRUSTM Powered Endocutter

amazingly agile

MIRUSTM Powered Stapling System comes with Better Holding Capacity and Greater Flexibility



PERFECT GRIP



MAX REACH



EASE IN USE

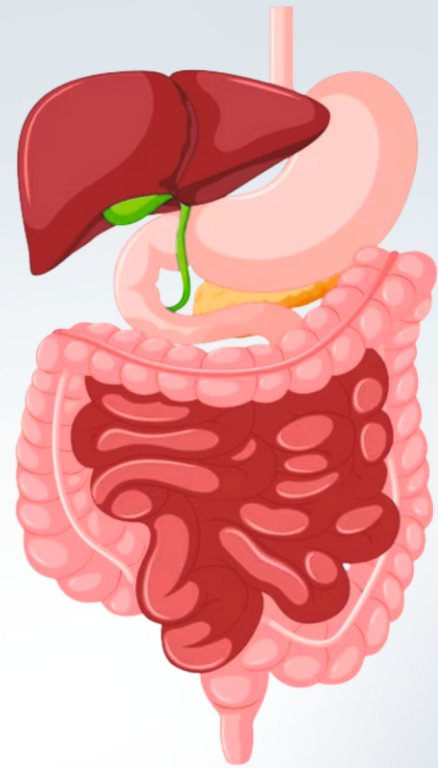


1st Powered Endocutter with 60° Articulation

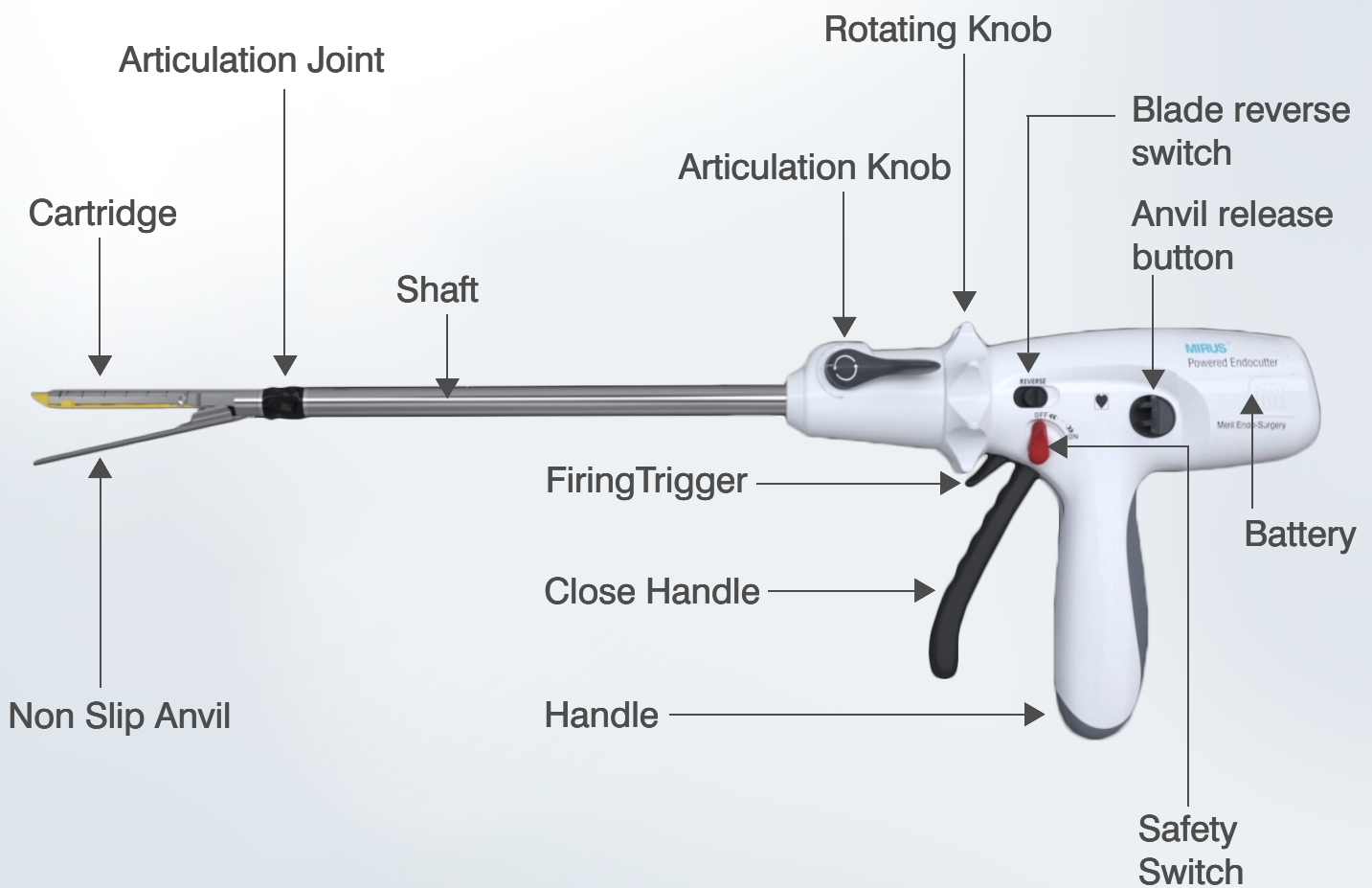
A proud product of Meril

Tissue Thickness presents a unique challenge when stapling laparoscopically. Powered Endocutters are designed to mitigate the force placed on them during firing based on the tissue thicknesses in order to provide Optimal compression, Consistent staple formation, Transect intended tissues with Stability, Agility and Control.

Meril Endo-surgery Introduces “MIRUS Powered Endoscopic Linear cutter with Reloads” with the great technical advantages for critical needs of many surgeons.



MIRUS™ POWERED ENDOSCOPIC LINEAR CUTTER AND RELOADS



RELOADS COLOUR



TECHNICAL ADVANTAGES



THE DESIGN OF 60° ARTICULATION ANGLE

The design of 60° articulation angle, guarantees the operation of the low and ultra low rectal cancer resection



DESIGNED STAPLE FORMATION

The innovative 6 rows stair - stepping, design staple formation offers a superior hemostatic effect



SAFETY PROTECTION

To prevent firing by mistake



NON-SLIP TECHNOLOGY

Non-slip Anvil to avoid tissue slippage



BATTERY MOTIVATED

Brings more stable operation



CARTRIDGE REMOVER

An assisting Tool

CODES	DESCRIPTION
MEC60-280	MIRUS POWER ENDOCUTTER 60mm SMALL
MEC60-340	MIRUS POWER ENDOCUTTER 60mm MEDIUM
MEC60-440	MIRUS POWER ENDOCUTTER 60mm LARGE
MEC45-280	MIRUS POWER ENDOCUTTER 45mm SMALL
MEC45-340	MIRUS POWER ENDOCUTTER 45mm MEDIUM
MEC45-440	MIRUS POWER ENDOCUTTER 45mm LARGE
MECRW-6025	POWER ENDOCUTTER RELOAD 60-25 - WHITE
MECRB-6035	POWER ENDOCUTTER RELOAD 60-35 - BLUE
MECRGD-6038	POWER ENDOCUTTER RELOAD 60-38 - GOLD
MECRG-6041	POWER ENDOCUTTER RELOAD 60-41 - GREEN
MECRT-6044	POWER ENDOCUTTER RELOAD 60-44- BLACK
MECRW-4525	POWER ENDOCUTTER RELOAD 45-25 - WHITE
MECRB-4535	POWER ENDOCUTTER RELOAD 45-35 - BLUE
MECRG-4541	POWER ENDOCUTTER RELOAD 45-41 - GREEN